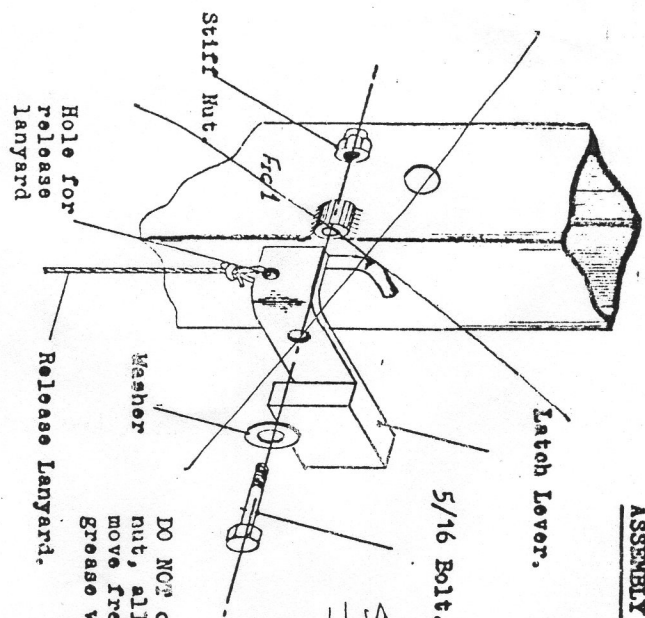


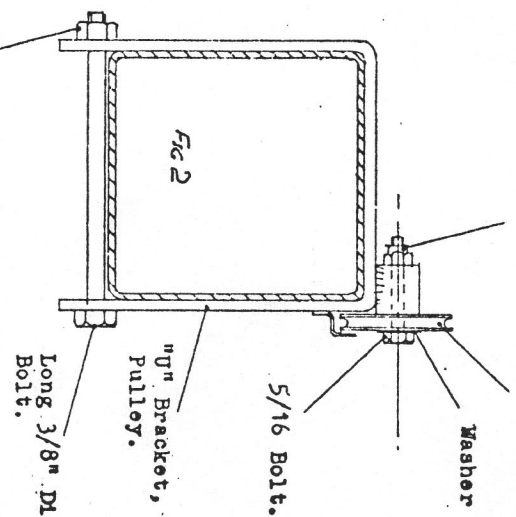
ASSEMBLY DETAILS OF 1ST.



SEE NEW UPLATCH

MAST EXTENSION LATCH ASSEMBLY
ON ALL MODELS. SM30.

Stiff Nut Cable Pulley



- 2 X Cable Pulleys
- 3 X 5/16" Bolts (2 Long)
- 1 X Plain Washers 5/16"
- 3 X Stiff Nuts 5/16"
- 1 X Latch Lever
- 1 X Lanyard
- 1 X Cable cleat - Post
- 1 X Cable Cleat - Mast
- 1 X Locating Peg
- 2 X 3/8" Bolts
- 2 X 3/8" Nuts
- 2 X 3/8" Spring Washers.

PACK CONTENTS.

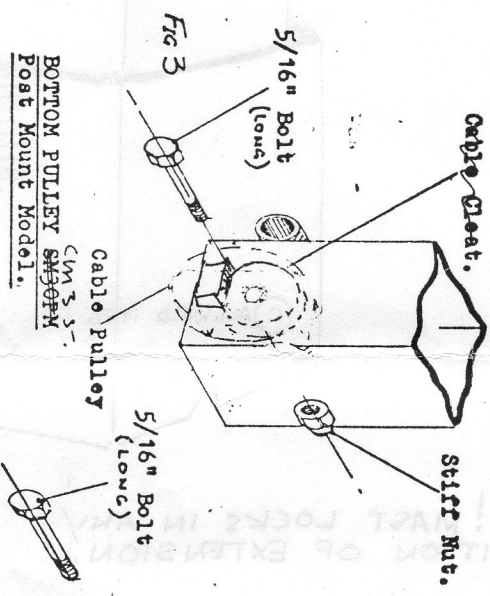
SM30PM Post Mount.

CM35WM
SM30PM Wall Mount.

- 1 X Cable Pulley
- 2 X 5/16 Bolt
- 2 X 5/16 Stiff Nut.
- 2 X 5/16 plain washer
- 1 X Latch Lever
- 1 X Lanyard
- 1 X Pulley Bracket "U" type
- 1 X long 3/8" Bolt.
- 1 X 3/8 plain nut

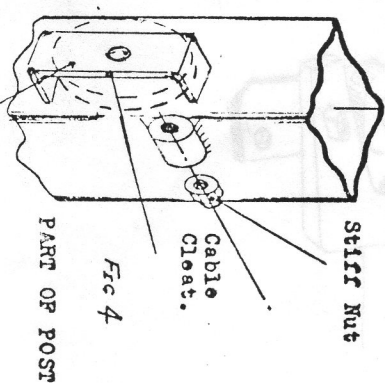
SEE CM35 PARTS LIST

Now welded on as a brace

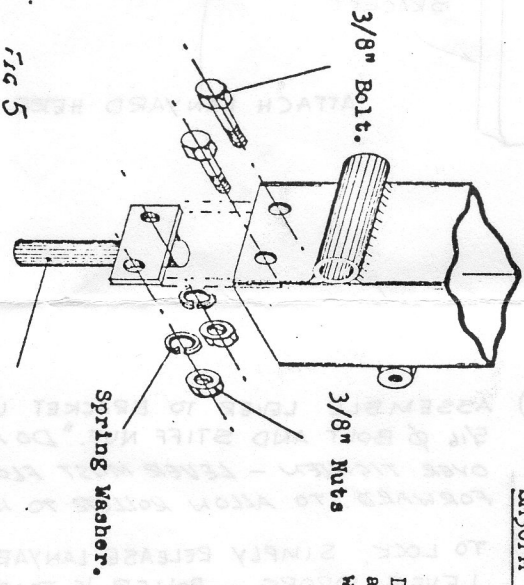


MOUNTING POST LUFFING PULLEY
SM30PM Post Mount Model

Cable Pulley



DO NOT over tighten pulleys, allow to run free. Grease well on assembly.



BOTTOM LOCATING PEG ASSEMBLY
SM30PM Post Mount Model.